

Technical Bulletin



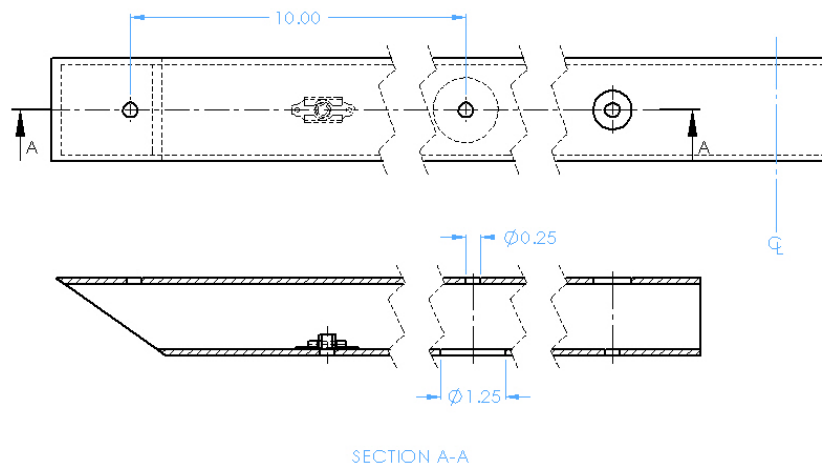
DP02	TB0041-2012	Elan Technologies	
From:	Billy Waits		
Subject:	THREE PIECE TAIL RELEASE	Date:	JAN 10th, 2012

Attention all Elan DP02 teams

In response to team feedback, for 2012 we have released a split tail for the DP02 chassis. This new design allows for the mid section (engine cover) to be removed while leaving the two outer sections (fenders) attached to the chassis. The other objectives were to lessen replacement cost as well as shipping cost.

Instructions for installation:

1. The split tail is a direct replacement fit and is manufactured to accept spring style cam locks.
 - a) During the installation it will be required to relocate two cam lock receptacles within the side pods (one left and one right of the engine cover) to fender joggles.
 - b) The optional tail support beam listed below has been updated to add two additional locations for nut plates in order to add additional fastening of the fenders to the beam. Alternatively, the current beam can be modified by the teams: On top side of the beam add two 1/4" diameter holes, 10" inboard from the existing tail mounting holes, On bottom of the beam add two 1-1/4" diameter holes, 10" inboard from the existing tail mounting holes. Either solution chosen will require to then back drill through the new holes into the fenders to locate the new fastening locations.



Parts required for first time upgrade:

Part No.	Description	Qty Per Car
DP02-40-079	Split Tail, LHS	1
DP02-40-080	Split Tail, RHS	1
DP02-40-081	Engine Cover	1
DP02-40-022	Tail Support Beam, Updated	OPT

These components are available for purchase through Carl Haas Automotive.

Billy Waits, Head of Engineering – (706) 658-2672 ext. 234

bwaits@elangroup.com

Page 1 of 1